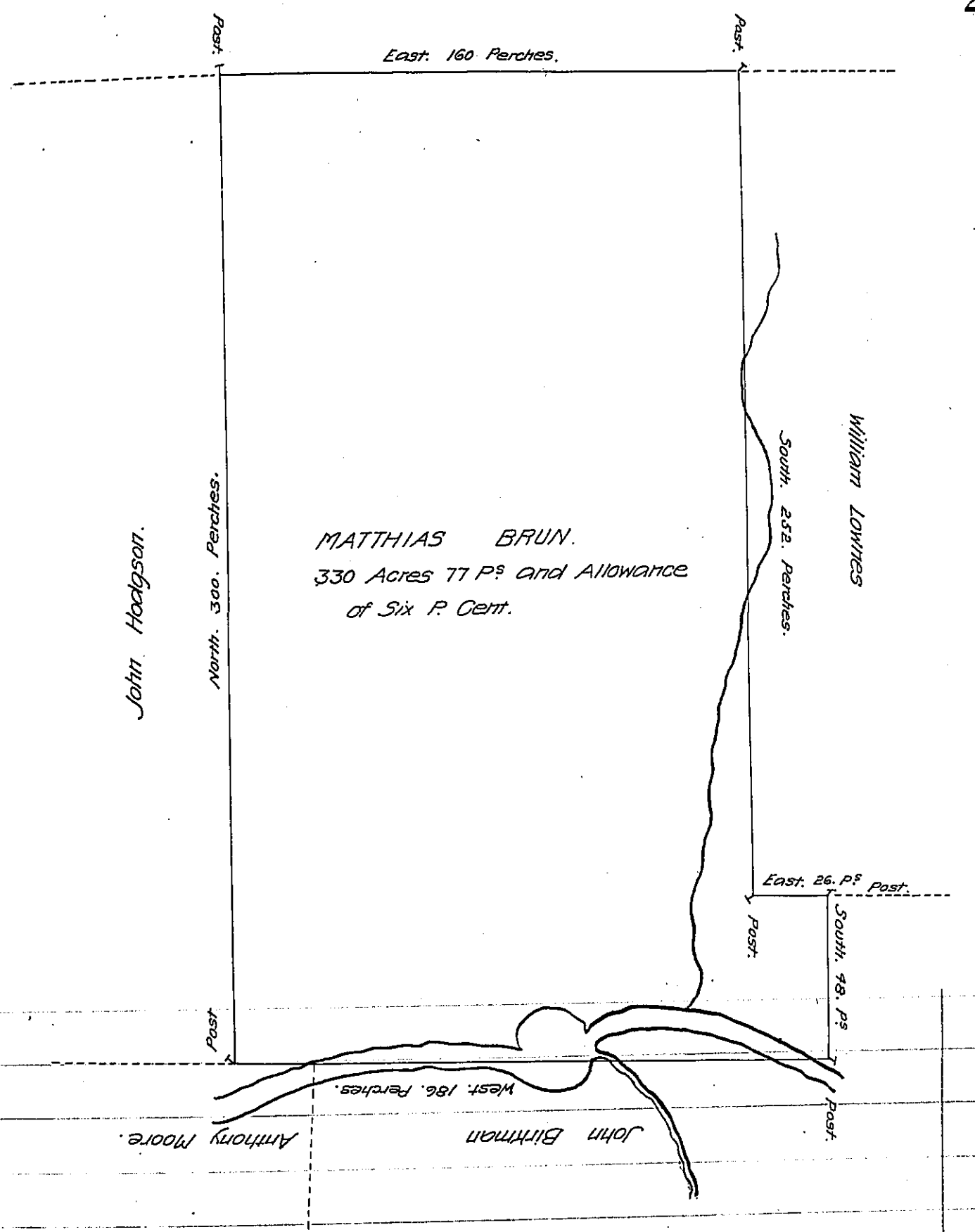


FORM NO. 1.



By Virtue of a Warrant dated 5<sup>th</sup> January 1773 Surveyed 22<sup>d</sup> August 1781 unto Matthias Brun the above described Tract of Land situate in a Valley which is partly South of Quenashahaque and adjoining Land of John Birckey in the County of Northumberland containing Three hundred and thirty Acres and Seventy seven Perches and Allowance of Six Acres P. Cent for Roads &c.

Chas<sup>s</sup> Lutrens D.S.

To John Lutrens Esq<sup>r</sup>  
Survey<sup>r</sup> Gen<sup>l</sup>

IN TESTIMONY that the above is a copy of the original remaining on file in the Department of Internal Affairs of Pennsylvania, made conformably to an Act of Assembly approved the 16th day of February 1833, I have hereunto set my hand and caused the Seal of said Department to be affixed at Harrisburg, this twentieth day of February 1908

*Henry Howell*  
Secretary of Internal Affairs.